



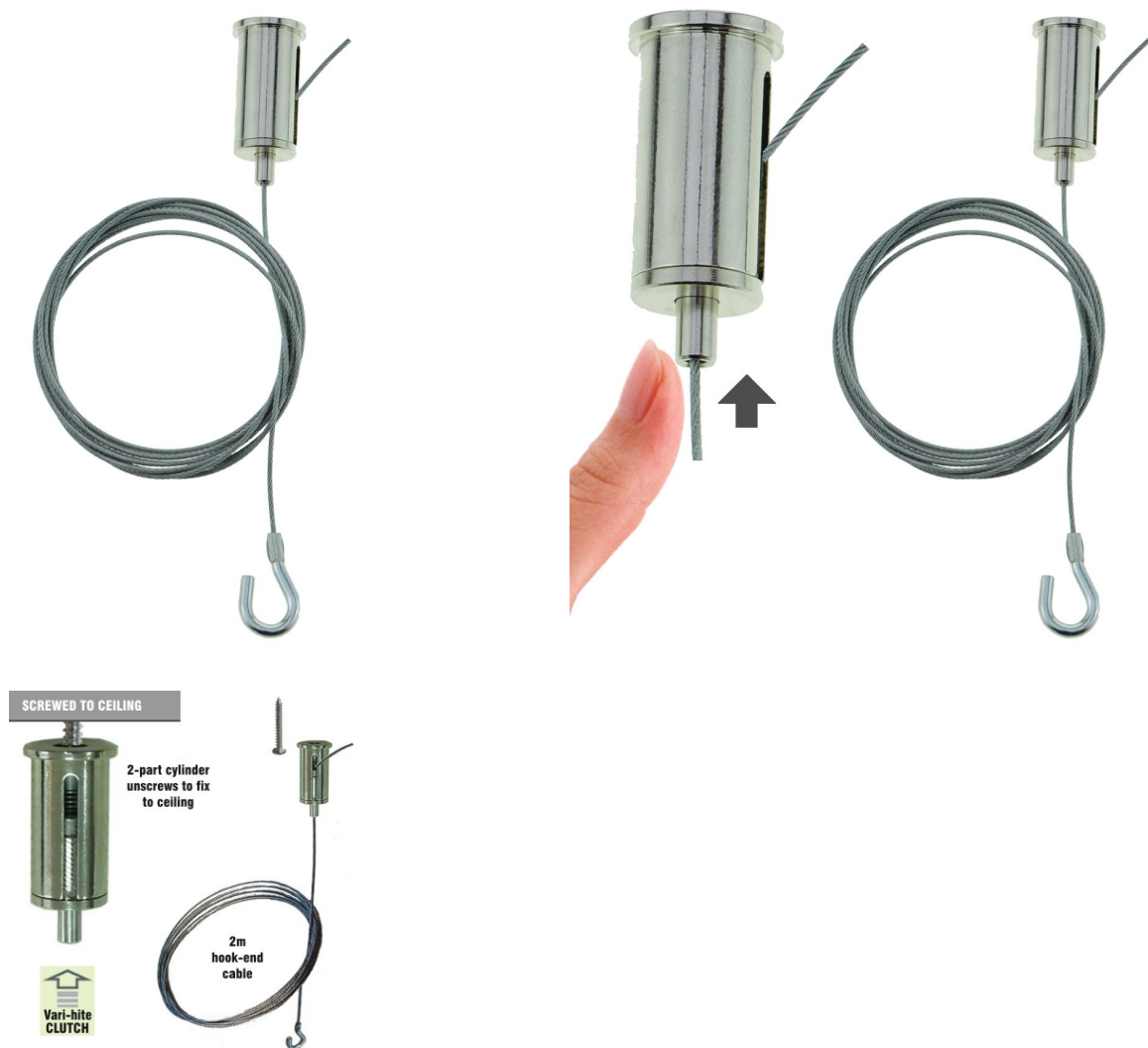
---

## Cylinder ceiling hanging fitting with hook

### Short Description

---

- Larger ceiling anchor for wire cable suspension systems.
- Ceiling anchors, suspension wires, and hooks for suspending signs and panels, and light fittings.
- Supermarket POS ceiling suspension fittings for hanging signs.



## Description

---

### Cylindrical ceiling anchor heavy duty with cable and hook

**Screw-on ceiling fitting for suspending signs and luminaires, complete with a 2m hook-end cable.**

- Chrome finish cylindrical fitting is supplied in 2 parts - the barrel fixes to the ceiling, and the inner cable gripper screws into the barrel.
- A 2m 1.5mm wire rope with a mini hook at the bottom is inserted into the gripper. It has an automatic grab mechanism - depressing the button releases the clutch, allowing for fine height adjustment.
- Excess cable exits from the slot on the side of the barrel. It can be trimmed off following adjustment.
- Each ceiling hanging kit comprises a 2-part ceiling hanger, a steel cable with an integral hook, together with screw fixings.

*This is **Kit A** - other [screw-on hanging kits](#) are available.*



### More Information

**Screw-on hanger mounting instructions:**

1. Unscrew the gripper mechanism from the barrel.
2. Position the barrel against the ceiling and carefully mark the fixing location.
3. Decide whether to use the plastic screw plug or screw directly into the ceiling (consult a tradesman if in doubt about how to achieve a suitable fixing). Check for electrical cables or pipes before drilling.
4. Screw the barrel to the ceiling.
5. Insert the plain end of the cable into the gripper and screw the gripper into the barrel with the cable exiting through the side slot.
6. Adjust the height of the hook as required. Use the clutch release button to extend the cable if required.
7. Cut off excess cable with good wire cutters when you are quite satisfied that the height is correct and the suspended component is dead level.

**Cable specification:**

Mini hook (zinc plated) bonded onto 1.2mm galvanised steel cable, length 2 metre, can be shortened after adjustment on site with good quality wire cutters. Safe working load up to 10kg with 5:1 safety factor.

**Ceiling hanger specification:**

Cylinder ceiling tensioner with built in clutch mechanism, nickel plated. Clutch release button provided at cable entry point. Side exit aperture for excess cable to emerge (prior to trimming any excess).

**Precautions:**

Do not lubricate the gripper mechanism.

Do not overload and ensure that your ceiling fixing method is appropriate to the ceiling construction and intended loading.

Do not paint the gripper.

Only intended for static loads and for use indoors.

Installers must satisfy themselves that the sign hanging kit is suitable for the specific application as site circumstances are beyond our control.

<div data-bbox="97 819 344 851" data-label="Section-Header"> <h3>Product Dimensions</h3> </div>	<div data-bbox="780 129 1257 732" data-label="Image"> <p>A technical drawing of a cylinder gripper. It is a vertical cylinder with a slightly wider top rim. A dimension line at the top indicates a width of 18 mm. A dimension line on the left indicates a height of 40 mm. A small vertical slot is shown on the right side of the cylinder. A small cylindrical protrusion is at the bottom center.</p> </div> <div data-bbox="780 857 1249 1435" data-label="Image"> <p>A technical drawing of a hook end wire rope. It shows a hook shape with a wire rope attached to the top. A dimension line on the left indicates a height of 25 mm. A dimension line across the inner curve of the hook indicates an inner diameter of 11 mm. A dimension line along the thickness of the hook's body indicates a thickness of 4 mm.</p> </div>
<div data-bbox="97 1744 352 1776" data-label="Section-Header"> <h3>Delivery and Returns</h3> </div>	<ul style="list-style-type: none"> <li>• We offer a choice of delivery options tailored to the goods selected and your location, calculated for you automatically in the Checkout. When feasible, you will be offered options for Free, Economy or Next Day delivery.</li> <li>• Any product returned by the purchaser must be unused and in its original packaging, which should be unmarked. If goods are received damaged or faulty we will take care of the problem.</li> <li>• For detailed information about Delivery charges or Returns and refund policies, please click on the links below.</li> </ul>
<div data-bbox="97 1957 373 1989" data-label="Text"> <p>Include in Google Feed</p> </div>	<div data-bbox="756 1957 799 1989" data-label="Text"> <p>Yes</p> </div>
<div data-bbox="97 2027 201 2058" data-label="Text"> <p>Postable</p> </div>	<div data-bbox="756 2027 793 2058" data-label="Text"> <p>No</p> </div>

Small parcel	No
Oversize	No

