

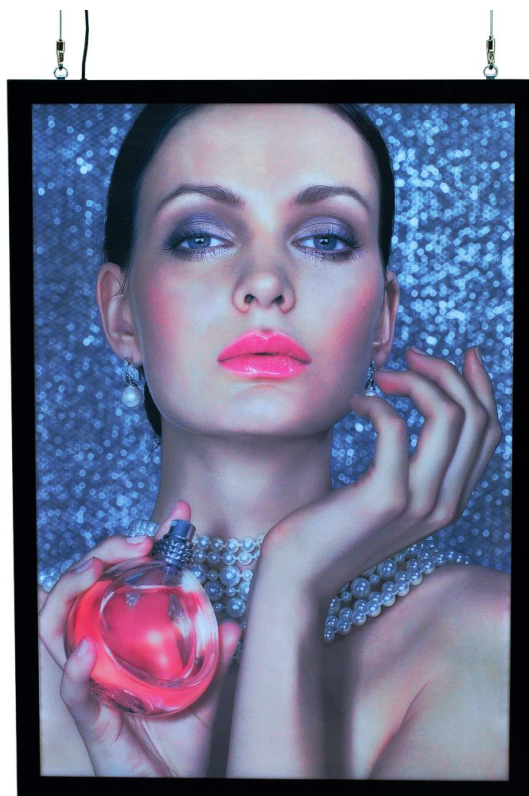


## Suspended LED light box with black magnetic covers

### Short Description

- Double-sided poster light box with slim LED frame
- Ceiling suspension fitting and 12-volt power pack included with long lead and 13A plug
- Save up to 60% energy costs!!!

### Product Images



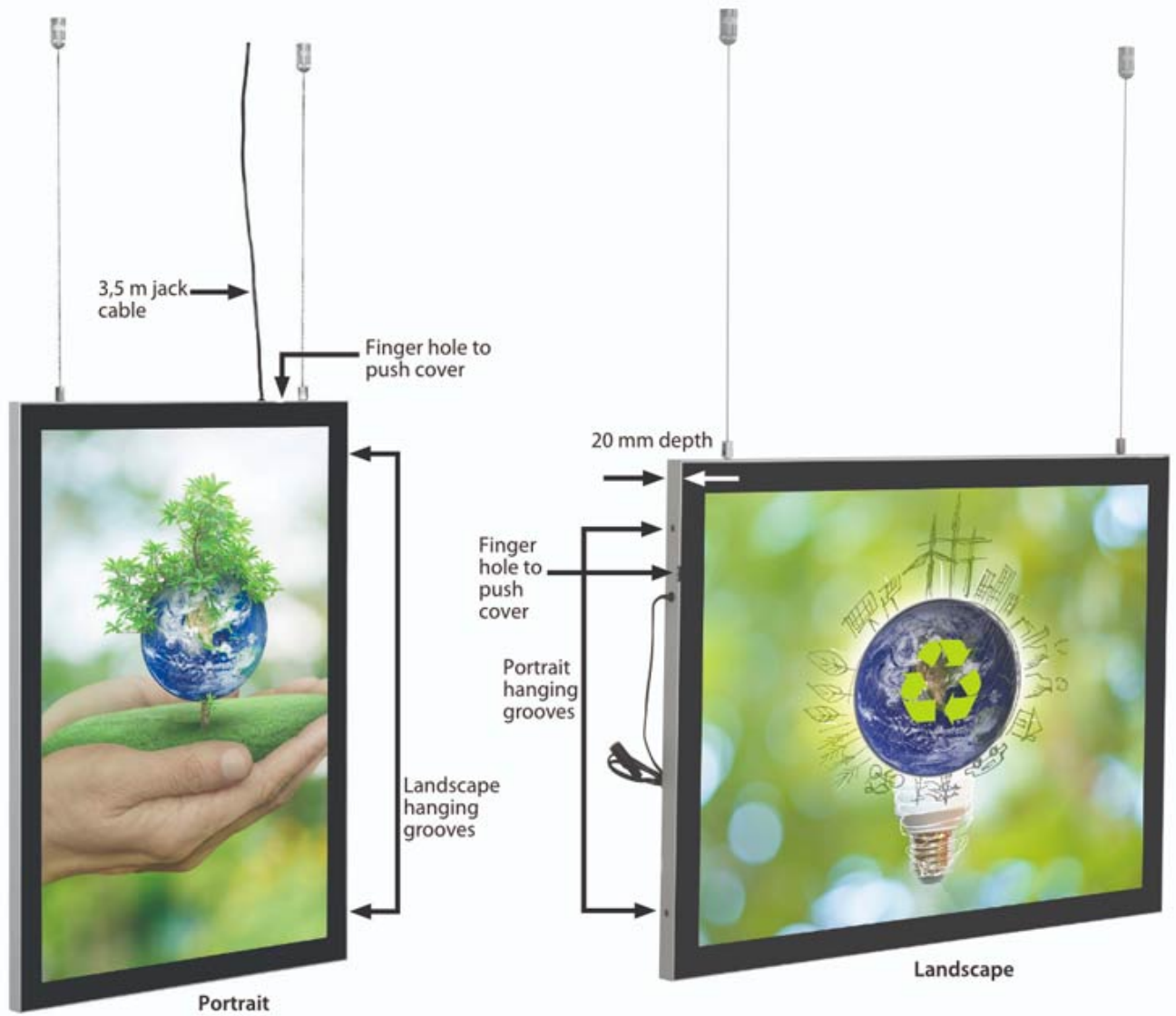
















## Description

---

### **Illuminated backlit poster light box with magnetic covers**

These beautiful double-sided poster light boxes are extremely popular as menu light boxes for restaurants, takeaways and fast-food outlets, but are just as good for in-store promotions, eye-catching displays and stylish information boards.

The Magneco double-sided illuminated light LED lightbox has top-mounted suspension fittings, giving an

attractive and stylish finish to the whole unit. With its slim case and magnetic cover, it looks great and is easy to use once installed. The double-sided LED lightbox is suspended from the ceiling using the hanging wires and screw fixing supplied.

- Double-sided with dual landscape or portrait fixings.
- 2mm crystal clear magnetic front and back cover with black border.
- Easy change posters with finger lift tabs.
- Hanging kits supplied with the lightbox.
- 60,000-hour duty life - 7-8 hours per day running with low running cost.
- Recommended for displaying posters printed on back-lit film or a similar type of paper which lets the light shine through.
- Evenly distributed back light from the hanging poster light box illuminates your poster from behind.

**Please note: your menu light box is for indoor use only and must be placed at least 30cm from a window and out of direct sunlight. The illuminated backlit poster light box has been manufactured to work in indoor temperatures up to a maximum of 35C.**



More Information

Product Dimensions

Assembly and Installation


**Save on energy costs with our LED menu light box!**  
Swap a traditional menu lightbox for one with LEDs for great savings on energy costs! LEDs are concealed within the frame border fully illuminating the rear light diffuser with even light on both sides. Highly efficient and long-life LED lighting ensures low running costs and maintained even brightness.  
The power supply plugs into the mains and steps down the voltage to a safe 12V. The power supply needs a switch off period every day to achieve the service life. We recommend connecting suspended poster light boxes via a time switch so that they are switched off when not required.

**Dimensions of the available sizes are as follows:**  
Dimensions are stated as Width x Height when the frame is presented in a portrait orientation.


Product Code	Poster Size	Copy Size	External Size	Lighting
MAGLED-A1-D	994x841mm	579x823mm	614x388mm	1800-2000 LUX

**Hanging Kit is included**  
The double-sided light box can be suspended in landscape or portrait format. Two hanging wires are supplied with screw-in ceiling fittings. The suspension height can be adjusted as required during initial installation.  
If you are planning to hang the light box from a suspended ceiling grid we recommend you order two suspended ceiling twist on grippers - our part number [USUS](#) (click link to view). These will replace the included screw-on anchors which are only intended for plaster and similar ceilings (i.e. which will accept a plug and screw).  
You will require a suitably positioned 3A socket to connect up your light box. If practical this can be located at high level adjacent to the light box or within the suspended ceiling void. Ideally the power socket should be on a circuit controlled by a time switch or there should be an accessible manual switch.


**How to hang the light box from a conventional ceiling**  
The suspended light box comes with an drop wires (excess wire can be discarded) plus ceiling anchors for screwing onto the ceiling or for locking onto conventional grid ceilings.  
First thread the suspension wires up through the suspension hole in the clear plastic hangers until it comes to the stop end.




To adjust the length of the drop you require, use the 'cable terminator' fitting on the plain end of the wire.



Tighten using the supplied allen key.



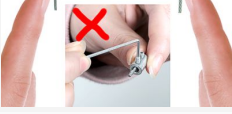



Screw the ceiling mounts onto the ceiling using the plugs and screws supplied.



Screw up the bullet cover to support the wire.

**Upgrade to fittings which are easier to adjust with suspended ceiling option**  
Alternatively order [these components](#) to suit either a conventional flat ceiling or a suspended ceiling as they will make adjusting the height easier.

CONVENTIONAL CEILING	SUSPENDED CEILING
	
	

Delivery and Returns

Include in Google Feed

Postable

Small parcel

Oversize

Yes

No

No

No

- We offer a choice of delivery options tailored to the goods selected and your location, calculated for you automatically in the Checkout. When feasible, you will be offered options for Free, Economy or Next Day delivery.
- Any product returned by the purchaser must be unused and in its original packaging, which should be unmarked. If goods are received damaged or faulty we will take care of the problem.
- For detailed information about Delivery charges or Returns and refund policies, please click on the links below.

