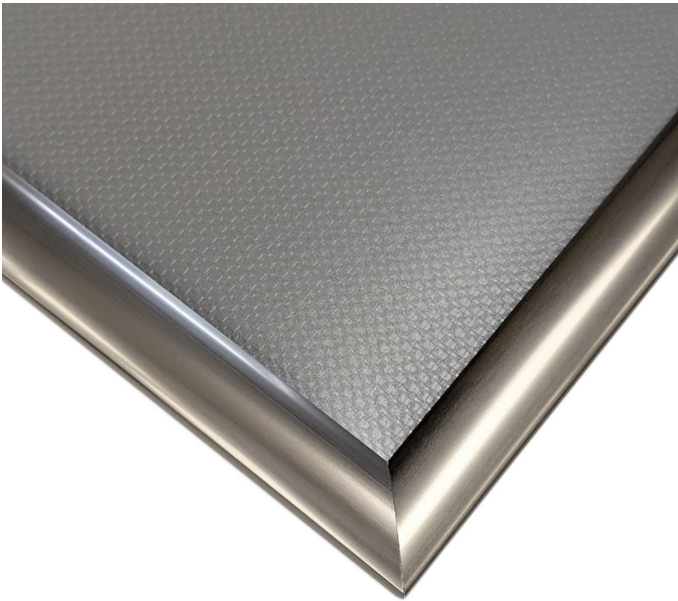




Stainless steel finish snap frames A4 - A1

Short Description

- Stainless steel effect snap frames in sizes A4, A3, A2, and A1
- Stainless steel poster frames offer a distinctive contemporary look - yet very affordable
- Premium look snap frames - the stainless steel finish is applied to the base aluminium





Description

Stainless Steel Snap Frames

Stainless steel poster frames are normally expensive. The special finish applied to these snap frames looks like stainless steel making the price affordable. You also benefit from snap-open fronts for quickly changing your signs and notices.

A special coating process over the 25mm aluminium snap frame profile achieves a realistic stainless steel finish. Stainless steel snap frames offer the best way to have stylish high-end-looking signage in your premises or facilities. Use our stainless steel look snap frames where the look is important.

- 25mm wide-coated aluminium frame profiles with a hinge-open snap action.
- Front-loaded posters and signs printed on regular A4, A3, A2 or A1 size paper.
- Concealed fixing is accessible when the frame is open. Screws and wall plug included.
- Includes an anti-glare clear plastic protector behind which you insert your photo, notice or poster.

More Information

- Stainless steel look frames are manufactured like regular snap frames with a realistic stainless steel finish applied.
- The metallic coating creates the impression that the poster frame is made from stainless steel.
- A dull polished finish creates the contemporary poster frame look which interior designers like to specify for specific projects.

Product Dimensions

Size Information for steel-look snap frames

- The width of the surround is 2.5cm = 25mm or 1 inch
- Front to back depth of 25mm profile snap frame: 12mm (approx 1/2 inch)
- A3 relates to the size of paper an A3 frame will fit.
- A narrow strip around the edge of your print is hidden when the frame is closed.

Visible poster size: 22mm less than actual poster (i.e. 11mm all round your poster is hidden by the frame surround)

- The overall size of the frame is larger than the paper inserted.

Overall (external) frame sizes are shown in the table:

Table of steel snap frame sizes

Order Code	Poster size	External size	Visible area
AS.A4/25-ST	210X297	239X326	188X275
AS.A3/25-ST	297X420	326X449	275X398
AS.A2/25-ST	420X594	449X623	398X572
AS.A1/25-ST	594X841	623X870	572X819

Assembly and Installation

Stainless steel snap frames are supplied fully assembled and individually boxed.

Fix Stainless steel frames using screws

- The usual way to permanently fix stainless look frames is with screws.
- Screws and plastic wall plugs are included with every snap frame we supply
- The wall plugs are for use with masonry walls such as brick and most plastered walls
- When screwing onto wood the plugs are not needed
- A drill and screwdriver are required for screw fixing (and we recommend using a spirit level and tape measure to ensure the steel-look frames are properly aligned). If in doubt please consult a proficient DIY or trades person.

Delivery and Returns

- We offer a choice of delivery options tailored to the goods selected and your location, calculated for you automatically in the Checkout. When feasible, you will be offered options for Free, Economy or Next Day delivery.
- Any product returned by the purchaser must be unused and in its original packaging, which should be unmarked. If goods are received damaged or faulty we will take care of the problem.
- For detailed information about Delivery charges or Returns and refund policies, please click on the links below.

Include in Google Feed

Yes

Postable

No

Small parcel

No

Oversize

No

