

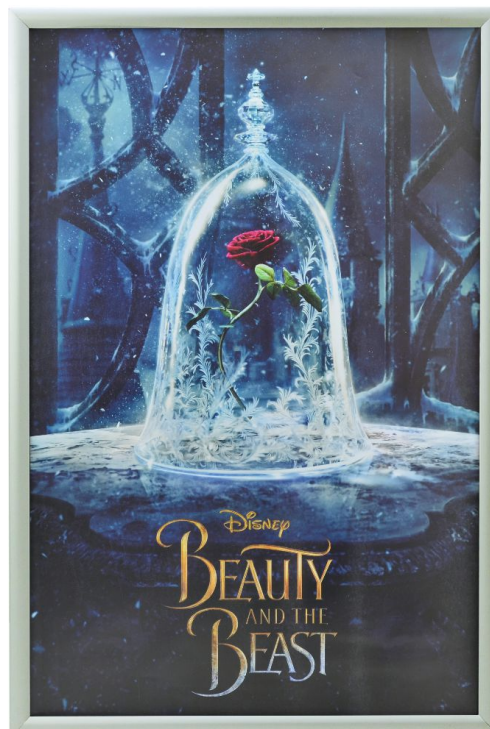


27X40 Movie poster frames in silver or black

Short Description

- Movie Poster Frames 27x40 inch with black or silver snap-open front profiles
- Easy to swap over 'one sheet' movie posters - frames also fit B1 posters (70x100 cm)
- Exceptional quality movie poster frames - change posters with the frame still on the wall
- Frames are aluminium with PVC poster overlay - matte silver or smart black colour options.

Product Images













Description

Movie poster frames One Sheet 27x40 inch size in silver or black finish.

Smart design snap frame to display one sheet size movie posters in cinema foyer, corporate offices, home cinema or contemporary living room.

- This is a 27"x40" frame also known as a one-sheet frame (for 1-sheet posters)
- The 27x40 aluminium frame has a contemporary styling using a 3 cm wide 'cushion' shaped profile which

complements the display.

- All frames are supplied complete and ready to fix, with anti-glare flexible plastic poster protector (not glass) front cover and wall fixings.
- Sometimes used for European B1 size posters: 70x100 cm (fit is 'close enough' for most customers). Exact poster size is 68.5 x 101.6 cm.
- We are proud to regularly supply these poster frames to The Walt Disney Company and Warner Brothers. Due to higher production volumes, we are pleased to offer very competitive prices for all our customers.

Movie Poster Frames | 27x40 inch snap frame silver finish | Easy change poster holder with wall fixings .

Black movie poster frames 27x40inch with snap-open front profiles | Easy to swap over one sheet movie posters.

<p>More Information</p>	<p>What size posters measured in cm will this frame fit? Please check sizes carefully!</p> <ul style="list-style-type: none"> • This frame will fit posters between 67.5cm – 68.6cm wide. If the poster is wider it may be necessary to trim slightly – for example 70cm wide (B1) may need to be trimmed if printed on stiff paper.. • The frame will work with posters between 99cm – 101cm high. • The frame can also be used on its side – i.e. for landscape format movie posters. <p>Snap frames are not conventional picture frames Snap frames are supplied with poster protectors – NOT GLASS.</p> <ul style="list-style-type: none"> • Poster protectors (front covers) are made from 500 micron plastic with an anti-glare surface on one side (or you can reverse for glossy side outwards). This is a flexible material used in all commercial snap frames but it does not have quite the same optical clarity as glass or acrylic. Note: Snap frames are not designed for use with glass or rigid (thick) plastic glazing – the cover needs to be flexed slightly to insert the poster and if a thicker glazing was substituted the mitre corners would not close properly. <p>Some people prefer to use snap frames without the cover.</p> <p>A word of caution relating to display of high value posters: Snap frames are ideal for display of regular movie posters, especially when the plan is to swap over posters – the snap mechanism makes it easy to change over your poster displays. Permanent display of irreplaceable posters in snap frames should be undertaken at owner's risk. Like other standard glazing materials the cover sheet does not provide much UV protection if the frame is to be exposed to bright daylight or sunlight. For high value movie posters you may wish to consult an expert picture framer who can supply archival presentation and storage solutions. As regular snap frames are not waterproof we do not suggest you use this frame outside (unless the poster is printed on waterproof media).</p> <p>Movie Poster SIZES UK movie posters are commonly 27in x 40in whereas vintage American posters were often 27in x 41in. This paper size is often referred to as One Sheet. 1 Sheet posters can therefore be accommodated in this size snap frame. 1-Sheet poster frames are popular with movie poster collectors. The B1 size which is a popular paper size in Continental Europe is 700mm x 1000mm (70cm x 100cm). 700x1000 converts exactly to 27-1/2in wide x 39-1/2in high: so this size frame can be used with B1 paper provided half inch can be sacrificed down each side.</p>												
<p>Product Dimensions</p>	<p>Size Information for 30mm Movie Poster Frames</p> <ul style="list-style-type: none"> • The Width of the surround is 3cm (or 30mm) • Front to back depth of the 30mm surround is 17mm. • When positioning a poster into the frame it is worth noting that you will lose 7.5mm all round. This is especially important where text is involved. • Overall frame sizes are larger than the paper inserted. Overall (external) frame sizes are shown in the table: <p>Dimensions in mm</p> <table border="1"> <thead> <tr> <th>Order Code</th> <th>Poster size</th> <th>External size</th> <th>Visible area</th> </tr> </thead> <tbody> <tr> <td>AS.27.40/30</td> <td>685x1016</td> <td>728x1059</td> <td>670x1001</td> </tr> <tr> <td>AS.27.40/30-B</td> <td>685x1016</td> <td>728x1059</td> <td>670x1001</td> </tr> </tbody> </table>	Order Code	Poster size	External size	Visible area	AS.27.40/30	685x1016	728x1059	670x1001	AS.27.40/30-B	685x1016	728x1059	670x1001
Order Code	Poster size	External size	Visible area										
AS.27.40/30	685x1016	728x1059	670x1001										
AS.27.40/30-B	685x1016	728x1059	670x1001										
<p>Assembly and Installation</p>	<p>Fix snap frames using screws</p> <ul style="list-style-type: none"> • The best way to permanently fix snap frame is with screws. • Screws and plastic wall plugs are included with every snap frame we supply • The wall plugs are for use with masonry walls such as brick and most plastered walls • When screwing onto wood the plugs are not needed • A power drill and screwdriver are required for screw fixing (and we recommend using a spirit level and tape measure to ensure the frames are properly aligned). If in doubt please consult a proficient DIY or trades person. <p>Fix snap frames using adhesive tape</p> <ul style="list-style-type: none"> • Rolls of double-side adhesive tape are available as an accessory item. • If double-side adhesive tape is used to fix frames (in place of the screws supplied) please check the smoothness and suitability of the wall. • Tiles and similar surfaces may be suitable provided they are cleaned thoroughly before application. • Tape fixing is not suitable for surfaces with a non-stick coating or porous/foamed surfaces. • We recommend that tape is used around the full perimeter of the frame. • Larger frames are normally best screwed. A residue of foam tape will be left on the wall or door after removal of the frame and the frame will usually be hard to get off. 												
<p>Delivery and Returns</p>	<ul style="list-style-type: none"> • We offer a choice of delivery options tailored to the goods selected and your location, calculated for you automatically in the Checkout. When feasible, you will be offered options for Free, Economy or Next Day delivery. • Any product returned by the purchaser must be unused and in its original packaging, which should be unmarked. If goods are received damaged or faulty we will take care of the problem. • For detailed information about Delivery charges or Returns and refund policies, please click on the links below. 												
<p>Include in Google Feed</p>	<p>Yes</p>												
<p>Postable</p>	<p>No</p>												
<p>Small parcel</p>	<p>No</p>												
<p>Oversize</p>	<p>No</p>												

