



Pedestal sign holder A4 or A3 with heavy duty base

Short Description

- Pedestal sign with heavy-duty mid-height stand won't topple easily even outdoors
- Choice of frame colour suitable for A4 or A3 size plain paper or laminated prints
- Dense recycled-plastic base with black decorative cover is rugged and stable
- Durable ABS slot-in style frame secured upright on short fixed-height metal pole

Product Images



available in
**6 different
colours**





Description

Freestanding pedestal sign for indoor or outdoor use

Meso is a mid-height heavy duty pedestal sign holder, suitable for indoor or outdoor use. Meso pedestal signs are supplied with either A4 or A3 poster frames made from durable ABS. The frames are available in a choice of colours so that your custom pedestal sign can be enhanced with a coloured frame chosen to complement your colour theme.

- Pedestal sign holder features a heavy-duty base, made from dense recycled material, topped off by a drop-on cover with attractive black textured finish.
- The pedestal stand is suitable for outdoor use and remains stable under moderate wind conditions.
- The poster frame clips securely onto the top of the short pole standing upright, to suit single-sided or double-sided, portrait or landscape poster display.

Floor-standing pedestal sign for topical messages

These waist-high signs with upright frames are ideal for guiding children, wheelchair users or adults, for displaying temporary notices or topical information.

- Short pedestal sign stand for indoors or outdoors, is equally at home on a school playing field to signpost activity stations on sports day or in a conference centre reception area.
- Perfect height shorty sign stand for primary or junior schools to show daily fruit choices, with the frame colour options enabling you to match popular school colour themes.
- The heavy, rubber-like base is made from recycled plastic with a durable decorative ABS cover for a more polished appearance.
- Meso compact floor signs are suitable for outdoor use due to their shorter height, which helps reduce the risk of being blown over by the wind.
- The overall height is approximately 900 mm (36 inches), depending on the chosen frame.
- Meso is a great height sign stand for primary and junior school children or wheelchair users - also for less in-your-face signage for adults.

Custom pedestal signs

Create your own custom pedestal sign by printing your bespoke message on A4 or A3 paper – pop the print through a laminator if you need it to be waterproof – and insert your custom sign into the frame, via the slot in the side. For double-sided messages, insert a poster either side of the central waterproof stiffener panel (supplied with every frame).

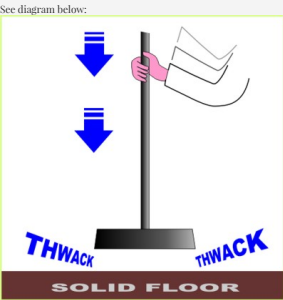
A3 pedestal sign holder can be used outdoors with encapsulated A3 prints or posters.

A4 pedestal sign suits plain paper or rain-proof laminated A4 signs.

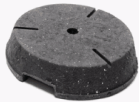
More Information

Specifications for short floor sign stands
Colour: The base and pole are black/charcoal.
The base is made from heavy recycled plastic and weighs around 3 kg. It is dense and very durable outdoors even in rough or boggy situations. There is a push-fit socket in the top to take the pole. The cover also made from outdoor grade plastic creates a smoother and less rugged look and is easier to keep clean (please choose the Covered Base version).
The pole is a 500mm high 25mm dia plastic coated steel tube. The pole pushes securely into the base (tamp it down a few times to engage fully).
Heavy duty T-piece – At the top of the pole there is a screw-in T-piece in which to secure the poster frame. The T-piece is a heavy duty model as these sign stands are intended for outdoor use in virtually all weathers.
The frames are made from durable outdoor grade ABS plastic. The frame clips firmly into the T-piece and can be positioned for either portrait or landscape display. (They can be rotated later if you change your mind). The A3 or A4 frames both have a sign insert slot in the edge of the frame. Simply slot your sign into the frame. (The slot must be positioned at the top or the side – not at the bottom).
The frames are supplied with a **stiffener** (Correx backing sheet) which makes them suitable for use with plain paper or laminated paper printed signs. If preferred the backing sheet can be removed creating sufficient depth for a 3mm thick rigid sign substrate.
The overall height varies between the angled and upright versions and depends on whether the A4 or A3 frame is fitted landscape or portrait. The guide height of 900mm stated above would apply when an A4 frame is used portrait or an A3 frame is used landscape. 900mm (96" approx) is the height of a typical kitchen worksurface.

HOW TO FIT THE POLE INTO THE BASE
Ensure this step is done on firm ground, such as a concrete floor.
If you have ordered a covered base, the cover should be threaded onto the pole and held out of the way until the pole has been properly secured into the base.
The pole is a firm push fit into the heavy base (no bolts are required).
First it needs to be introduced a short way into the base (enough to grip).
Then lift the pole to raise the base off the ground and bring it down firmly on the floor.
Repeat until the pole is securely fixed into the base.



HOW TO FIT THE POLE INTO THE BASE
The illustration below shows the four easy steps required to assemble the poster stand.
To insert the pole into the base ensure this step is done on firm ground, such as a concrete floor.
If you have ordered a covered base, the cover should be threaded onto the pole and held out of the way until the pole has been properly secured into the base.



Additional Guidance
Inserting the pole
The pole must be pushed right into the base! Otherwise it will lean or wobble.
1. The pole is a firm push fit into the heavy base (no bolts are required).
2. First it needs to be introduced a short way into the base (enough to grip).
3. Then lift the pole to raise the base off the ground and bring it down firmly on the floor.
4. Repeat until the pole is securely fixed into the base.
Inserting the frame into the T-piece
The slot in the frame must be at the top or side - never at the bottom!
If you insert the frame upside down (i.e. with the frame opening at the bottom) it will be loose.
1. Temporarily remove the corrugated backing sheet from the frame.
2. Use firm pressure to 'click' the frame securely into the T-piece. A slight rocking motion may help.
3. Centralise the frame by sliding to engage the central 'pip'.
4. Slide to the corner and rotate to change from portrait to landscape.
5. Rotate the frame all the way round until the slot is at the bottom to remove the frame from the T-piece.

Covered Base
Thread the cover onto the pole. Insert the pole into the rubber base (as per above) and then allow the cover to drop down into position. It will cover the majority of the rubber base, will some rough edges may still show. This cannot be avoided.



Assembly and Installation

Delivery and Returns

- We offer a choice of delivery options tailored to the goods selected and your location, calculated for you automatically in the Checkout. When feasible, you will be offered options for Free, Economy or Next Day delivery.
- Any product returned by the purchaser must be unused and in its original packaging, which should be unmarked. If goods are received damaged or faulty we will take care of the problem.
- For detailed information about Delivery charges or Returns and refund policies, please click on the links below.

Include in Google Feed

No

Postable

No

Small parcel

No

Oversize

No

