



Floor stand for rigid sign board - Panelfix

Short Description

- Panelfix FreeStander is a floor sign stand used to hold a rigid sign up to 10mm thick
- Best used with printed foam-centred board or other light but rigid graphic substrate
- Clamp fitting with thumbscrew fixes onto adjustable height pole with a stable base

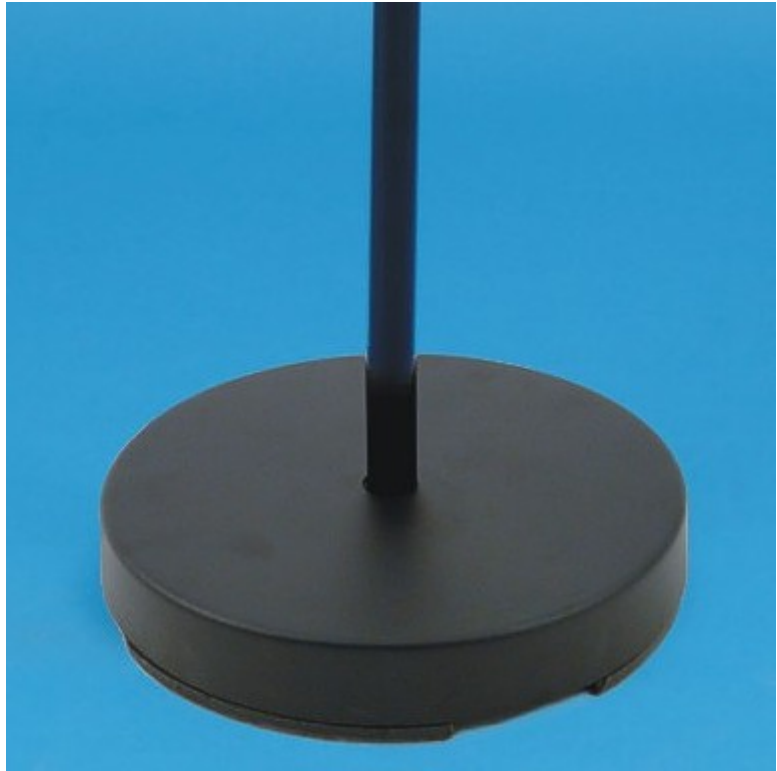
Product Images











Free-standing PanelFix display panel stand

- Panelfix FreeStanders are used to display small signs typically up to 40 cm square and 1 cm thick - though the maximum size depends on the type and weight of sign board used and the nature of the application.
- Any shape sign can be used provided the board is stiff enough to be clamped in one central bottom point. The sign is not included in the price.
- A sign printed on 10mm foam centred board or a similar type of display panel is secured in the U-shape metal bracket by a small handwheel screw. The depth of the U-bracket is 10 mm and the width is 100 mm.
- The pole, also made of metal, is telescopic with height adjustment from 1m up to 1.8m. Signs can be displayed at chest height, eye level or above the heads of a busy crowd
- The pole is secured into the base with a firm push-fit. This Covered base comprises a heavy recycled plastic core with a moulded decorative top cover. The stand colour is black.
- This floor stand for rigid sign boards is normally limited to indoor use - but short-term outdoor use may be practical for smaller signs printed on waterproof substrates.
- Shaped signs are possible to secure as long as there is a flat area at the bottom at least 10 cm wide - the actual signboards are generally produced by a sign or graphics company (we only supply the stands)

More Information

Details of Panelfix FreeStander

The U-bracket has a front-to-back depth of 10mm. Thinner panels can be used, preferably with a packer infill to make up the 10mm overall depth. The length of the bracket is 100mm and height of grip is approximately 25mm.

The panel size can be chosen to suit the application. 400mm wide by 300mm high is a typical size which may be used. A lightweight sign substrate such as foam centred board is ideal. In order to avoid the finished sign stand being too top heavy large panels made from dense material should be avoided.

This product will not be wind stable outdoors in anything more than a light breeze. It is primarily intended for indoor use.

HOW TO FIT THE POLE INTO THE BASE

Ensure this step is done on firm ground, such as a concrete floor.

The base cover should be threaded onto the pole and held out of the way until the pole has been properly secured into the base.

The pole is a firm push fit into the heavy base (no bolts are required).

First it needs to be introduced a short way into the base (enough to grip).

Then lift the pole to raise the base off the ground and bring it down firmly on the floor.

Repeat until the pole is securely fixed into the base.

See diagram below:



Assembly and Installation

Delivery and Returns

- We offer a choice of delivery options tailored to the goods selected and your location, calculated for you automatically in the Checkout. When feasible, you will be offered options for Free, Economy or Next Day delivery.
- Any product returned by the purchaser must be unused and in its original packaging, which should be unmarked. If goods are received damaged or faulty we will take care of the problem.
- For detailed information about Delivery charges or Returns and refund policies, please click on the links below.

Include in Google Feed

Yes

Postable

No

Small parcel

No

Oversize

No

