



## Short outdoor floor stands for A3 and A4

### Short Description

- Outdoor sign stands won't topple easily, suitable for A4 or A3 size laminated prints
- Heavy recycled-plastic base - BASIC base model or COVERED base with decorative cover
- Angled versions are called TILT's - for single-sided use, easy to read up close
- Upright versions are called MESO's - can be used double-sided and viewed from a distance

### Product Images











## Description

---

### Upright or angled sign stands can be used outdoors

Indoor or outdoor floor sign stands are available with angled or upright frames. With people having to queue outside they are suitable for outdoor social distancing signs when used with a laminated print.. The round rubber-like base is made from heavy recycled plastic and is supplied with or without a drop-on decorative plastic cover.

TILT (angled) and MESO (upright) floor signs are generally suitable for outdoor use – because they are relatively short and this significantly reduces the risk of toppling in the wind.

- Short floor signs are ideal for garden centres, reserved parking signs, temporary event signage etc. Approx ht 900 mm (36 inch) overall, depending on the choice of frame.
- A4 or A3 size frames can be used portrait or landscape – print your own sign and slot it into the frame. Refer to the Assembly and Installation tab.
- Paper prints must first be laminated for outdoor use (the frames are slightly oversized to fit).
- **TILT model** – this has an angled frame which makes it easier to read text when standing closeby.
- **MESO model** – this has an upright head for double-sided use if required. It is easier to read from a lower viewing angle – e.g. from the seat of a car or a wheelchair.
- **We offer a choice of bases**

Both are equally heavy and stable, but one is more presentable.

**BASIC base** – a rougher rubber-like base made of dense recycled plastic

**COVERED base** – by the addition of a light drop-on 'cover' the base is transformed from rustic to more refined.

## Spare parts for short outdoor sign stands

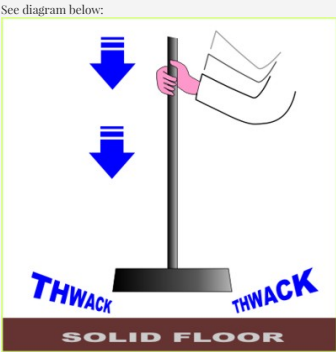
Just in case your sign stand has had a little accident follow the links for a comprehensive list of spare parts:

- [Spares for MESO](#) upright sign stands.

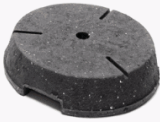
More Information

**Specifications for short floor sign stands**  
**Colour:** The frame base and pole are black/charcoal. A version can be produced specially with a green or dark green frame. Please call as the special colour model cannot be ordered online.  
**The base** is made from heavy recycled plastic and weighs around 3 kg. It is dense and very durable outdoors even in rough or boggy situations. There is a push-fit socket in the top to take the pole. An optional cover also made from outdoor grade plastic creates a smoother and less rugged look and is easier to keep clean (please choose the Covered Base version).  
**The pole** is a 500mm high 25mm dia plastic coated steel tube. The pole pushes securely into the base (tamp it down a few times to engage fully).  
**Heavy duty T-piece** - At the top of the pole there is a screw-in T-piece in which to secure the poster frame. This T-piece can be supplied with a pre-set angle (*TILT model*) or a straight T-piece to hold the frame upright (*MESO model*). The T-piece is a heavy duty model as these sign stands are intended for outdoor use in virtually all weathers.  
**The frames** are made from durable outdoor grade ABS plastic. The frame clips firmly into the T-piece and can be positioned for either portrait or landscape display. (They can be rotated later if you change your mind). The A3 or A4 frames both have a sign insert slot in the edge of the frame. Simply slot your sign into the frame. (The slot must be positioned at the top or the side - not at the bottom).  
The frames are supplied with a **stiffener** (Correx backing sheet) which makes them suitable for use with plain paper or laminated paper printed signs. If preferred the backing sheet can be removed creating sufficient depth for a 3mm thick rigid sign substrate.  
**The overall height** varies between the angled and upright versions and depends on whether the A4 or A3 frame is fitted landscape or portrait. The guide height of 900mm stated above would apply when an A4 frame is used portrait or an A3 frame is used landscape. 900mm (36" approx) is the height of a typical kitchen worksurface.

**HOW TO FIT THE POLE INTO THE BASE**  
Ensure this step is done on firm ground, such as a concrete floor.  
If you have ordered a covered base, the cover should be threaded onto the pole and held out of the way until the pole has been properly secured into the base.  
  
The pole is a firm push fit into the heavy base (no bolts are required).  
First it needs to be introduced a short way into the base (enough to grip).  
Then lift the pole to raise the base off the ground and bring it down firmly on the floor.  
Repeat until the pole is securely fixed into the base.



**HOW TO FIT THE POLE INTO THE BASE**  
The illustration below shows the four easy steps required to assemble the poster stand  
To insert the pole into the base ensure this step is done on firm ground, such as a concrete floor.  
If you have ordered a **covered base**, the cover should be threaded onto the pole and held out of the way until the pole has been properly secured into the base.



Additional Guidance

**Inserting the pole**  
The pole must be pushed right into the base! Otherwise it will lean or wobble.  
1. The pole is a firm push fit into the heavy base (no bolts are required).  
2. First it needs to be introduced a short way into the base (enough to grip).  
3. Then lift the pole to raise the base off the ground and bring it down firmly on the floor.  
4. Repeat until the pole is securely fixed into the base.

**Inserting the frame into the T-piece**  
The slot in the frame must be at the top or side - never at the bottom!  
If you insert the frame upside down (i.e. with the frame opening at the bottom) it will be loose.  
1. Temporarily remove the corrugated backing sheet from the frame.  
2. Use firm pressure to 'click' the frame securely into the T-piece. A slight rocking motion may help.  
3. Centralise the frame by sliding to engage the central 'pip'.  
4. Slide to the corner and rotate to change from portrait to landscape.  
5. Rotate the frame all the way round until the slot is at the bottom to remove the frame from the T-piece.

**Optional Covered Base**  
Thread the cover onto the pole. Insert the pole into the rubber base (as per above) and then allow the cover to drop down into position. It will cover the majority of the rubber base, will some rough edges may still show. This cannot be avoided.



Assembly and Installation

Delivery and Returns	<ul style="list-style-type: none"><li>• We offer a choice of delivery options tailored to the goods selected and your location, calculated for you automatically in the Checkout. When feasible, you will be offered options for Free, Economy or Next Day delivery.</li><li>• Any product returned by the purchaser must be unused and in its original packaging, which should be unmarked. If goods are received damaged or faulty we will take care of the problem.</li><li>• For detailed information about Delivery charges or Returns and refund policies, please click on the links below.</li></ul>
Include in Google Feed	Yes
Postable	No
Small parcel	No
Oversize	No

