



---

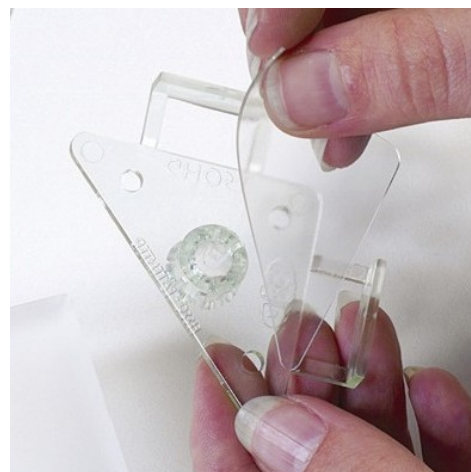
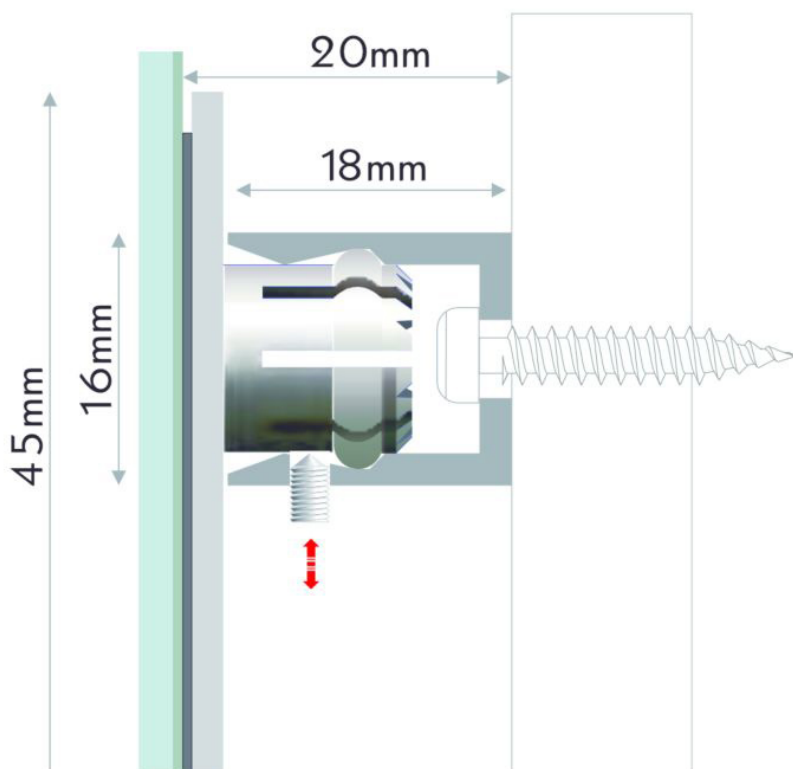
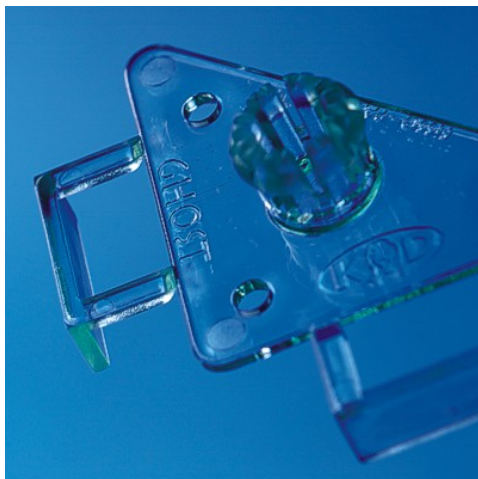
## Hidden Sign Fixing

### Short Description

---

- Invisible stand off sign fixing system
- Simple to use hidden sign fixings
- View the installation video to see how easy perfect results can be achieved.

## Product Images



## Description

### Fisso Ghost concealed sign panel fixing.

The fisso Ghost sign fixing system is perfect where traditional standoff fixings are either impractical or would spoil the look of the picture / graphic panel or sign. The Ghost does still have the same effect of standing the graphic off the wall without disturbing the main image.

- **Invisible sign fixing - also for mounting pictures or photographs mounted on acrylic or other substrates.**

- **Easy fixing to panel and wall.**
- **Bond with clear adhesive pads supplied (panels up to 600 gm) or screw to rear of panel.**
- **Complete kit of 4 fixings. Drilling template included.**
- **Snap off panel positioners for a perfect fit every time**
- **Stands 18mm from the wall**

Watch the "how to" video to see how easy it works!

Important: Please view instructions under View more details.

More Information	<p><b>How to use Ghost concealed fixings</b></p> <p>Due to the numerous possible combinations of panel and wall type we stress that every application must be evaluated by the fitter. However the following notes may be helpful.</p> <p>The Ghost mounting plate is made of clear plastic (polycarbonate) so it will be virtually invisible when fixed to the rear of a see-through panel (for example, clear acrylic). The triangular adhesive pads supplied with each Ghost are suitable for such acrylic panels which weigh less than 600 grams (i.e. 150gm per fitting). The 3M clear adhesive pads may not work on other surfaces - see alternatives below.</p> <p><b>3 Steps to achieve a good bond</b></p> <p>When the double-sided adhesive pads are used it is important to observe three steps to ensure the bond performs as intended:</p> <ol style="list-style-type: none"><li>1. Use the supplied wipes to ensure both* surfaces are degreased before applying the pads - *i.e. the panel and the clear plastic component of the Ghost.</li><li>2. Apply with firm pressure at room temperature.</li><li>3. Allow the bond to cure for a minimum of 8 hours before hanging the panel. Do not rely only on the initial grab of the adhesive without the recommended curing time.</li></ol> <p><b>Alternatives:</b> for situations where the supplied clear adhesive pads are not suitable</p> <p>The clear polycarbonate triangular mounting component of the Ghost can be fixed to the back of the graphic panel in alternative ways. For example, a more permanent adhesive such as superglue can be used. If the panel is thick enough to take short screws from behind (without breaking through the front of the panel) screwing is especially recommended.</p> <p><b>INSTALLATION METHOD</b></p> <p>Please watch the video to explain the general principle. Read the instruction supplied with the product.</p> <p>The clear polycarbonate mounting plate comes with corner positioners to assist location. These are snapped off once the mounting plates have been fixed to the back of your graphic panel. Follow the above guidance about fixing these plates to the back of the panel - normally done the day before fixing to the wall.</p> <p>The tiny circular adhesive discs are used to indicate where the wall should be drilled. The panel is offered up with these discs in place on the polycarbonate 'posts' so that they transfer to the wall serving as a drilling guide.</p> <p>Please check with a spirit level and then drill the wall using the precise locations now displayed on the wall.</p> <p>The supplied stand-off fittings can then be screwed to the wall using suitable wall plugs.</p> <p>Ensure the grub screws face outwards so they can be accessed once the panel is in place.</p> <p>The panel can then be offered up once more so that the posts engage precisely into the stand-off fittings. From the side of the metal stand-offs insert the allen key to tighten the grub screw and lock the panel in place.</p>
Delivery and Returns	<ul style="list-style-type: none"><li>• We offer a choice of delivery options tailored to the goods selected and your location, calculated for you automatically in the Checkout. When feasible, you will be offered options for Free, Economy or Next Day delivery.</li><li>• Any product returned by the purchaser must be unused and in its original packaging, which should be unmarked. If goods are received damaged or faulty we will take care of the problem.</li><li>• For detailed information about Delivery charges or Returns and refund policies, please click on the links below.</li></ul>
Include in Google Feed	Yes
Postable	No
Small parcel	No
Oversize	No

