

CONNECTION KIT FOR HINGED SCREENS - ASSEMBLY INSTRUCTIONS

A triangular base plate replaces the flat bar foot at the end of each screen which links to an adjacent screen

Wheel option

Use the large holes to fit wheels

With the wheel option, two locking castors are fitted to each triangular plate



Glide foot option

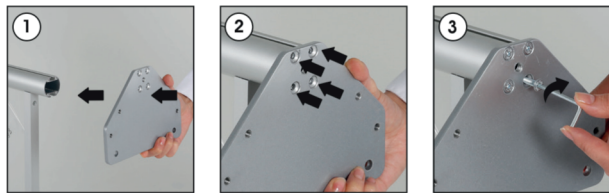
Use the small holes to fix rubber feet

Unscrew both rubber glides from one regular bar foot. Transfer the glides to the triangular connector plate

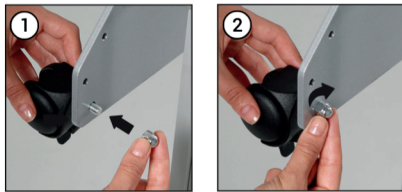
The set of 4 holes are countersunk on the underside of the plate

Bar foot
(Two flat bar feet are supplied with every stand-alone screen)

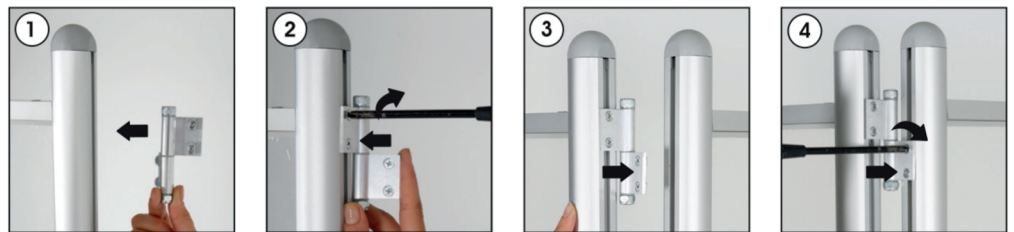
STEP 1 Attach triangular base (at every end which links)



STEP 2 Fit wheels (or glide feet)

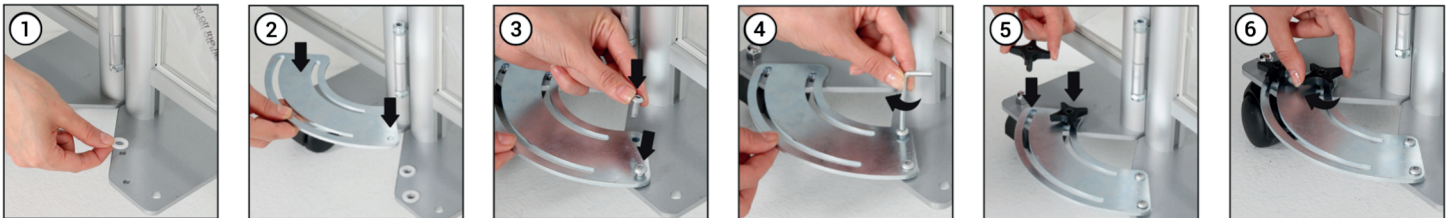


STEP 3 Fit hinges x 3 Insert T-nuts into the channel. Push/rotate with a screwdriver to engage. Then tighten.



STEP 4 Fit the angle-lock device

The crescent-shaped plate should be fitted on the side which will close. (Holes are provided in the triangular base to suit either side)



White nylon washers to be positioned under the crescent plate - both at the fixed end (of the first screen) and where the black locking hanwheels locate into the adjoining screen. This is to prevent to the two metal plates rubbing together during angle adjustment.



Wheel option

Use the handwheels to lock the angle of the screens from straight down to 90 degrees



Glide foot option