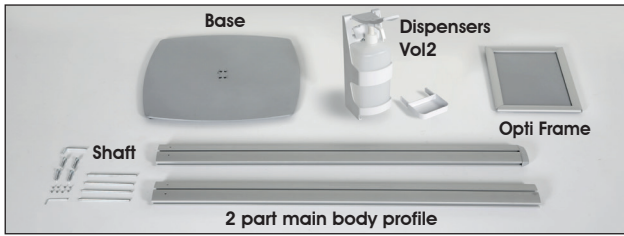


Installation Instructions

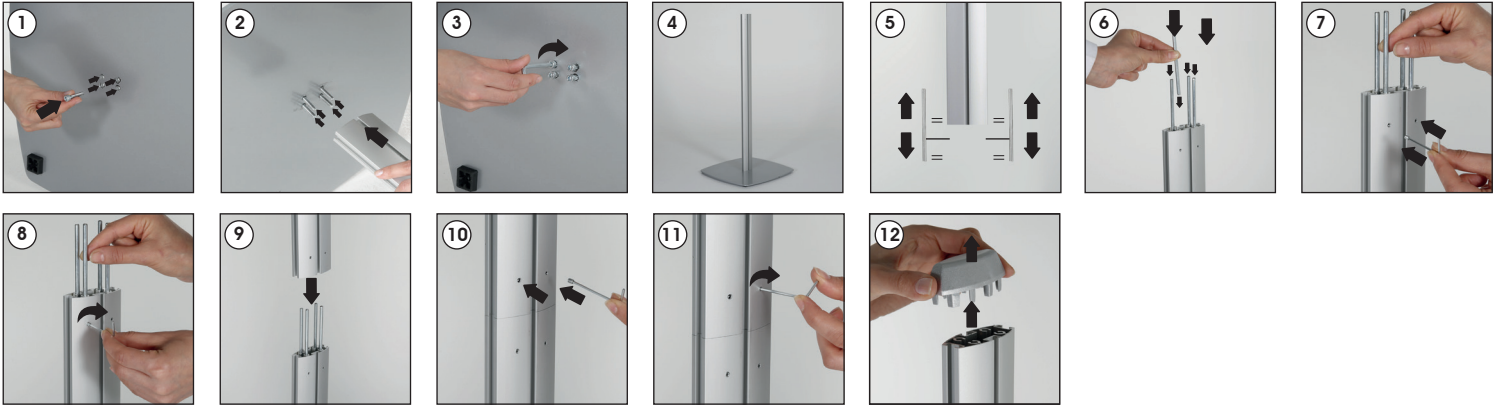
(1011639H000)

NOVEL SANITIZING STATION WITH OPTI FRAME

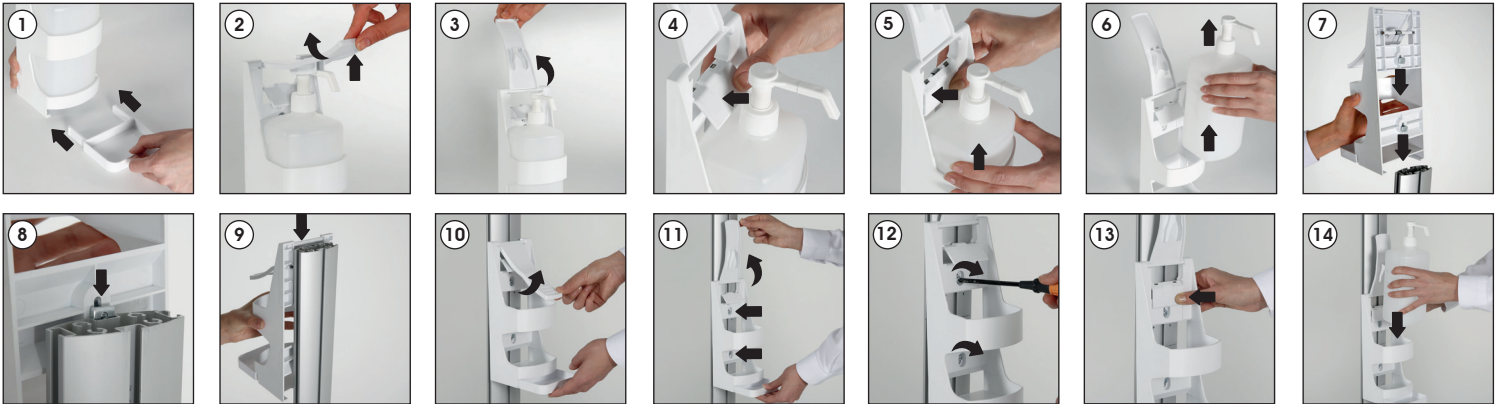


Each product includes

- 1 x Opti Frame
- 1 x Sanitizer Dispenser Vol2
- 1 x Base
- 2 x Main body profile
- 8 x Bolt Setskur M4x5
- 4 x Bolt Imbus M6x30
- 4 x Shaft Ø5x120 mm
- 1 x 5 Allen key
- 1 x 2 Allen key



Sanitizer Dispenser Vol2



Note: The nut shown in the 7th, 8th and 9th pictures should be installed horizontally.

Opti Frame



Note: The nut shown in the 1st, and 2th pictures should be installed horizontally.

- Please inform the order number on the product or on the carton (e.g. 1/110001394-460) to the place that you have made the purchase if any problem with the product occurs.
- Bitte teilen Sie bei jeglichen Problemen, die auf dem Artikel oder auf der Verpackung aufgeführte Auftragsnummer (z.B: 1/110001394-460) Ihrem Händler mit.
- Lütfen üründeki herhangi bir sorun için ürünün veya paketin üzerindeki sipariş numarasını (örnek: 1/110001394-460) satın aldığınız yere bildirin.
- All rights reserved. All pictures, figures and writings are secured internationally by copy-right law. Infringements will be sued by civil and legal law.
- Alle Rechte vorbehalten. Alle Bilder, Zeichnungen und Texte sind international urheberrechtlich geschützt. Etwaige Zuwiderhandlungen werden zivil- und strafrechtlich verfolgt.
- Tüm hakları saklıdır. Tüm resimlerin, şemaların ve yazıların kopya hakları uluslararası kanunlarla güvence altına alınmıştır. İhlali durumunda sivil ve hukuki yasa mercii tarafından dava edilecektir.

CAUTION : Gel are not included in the pack.

